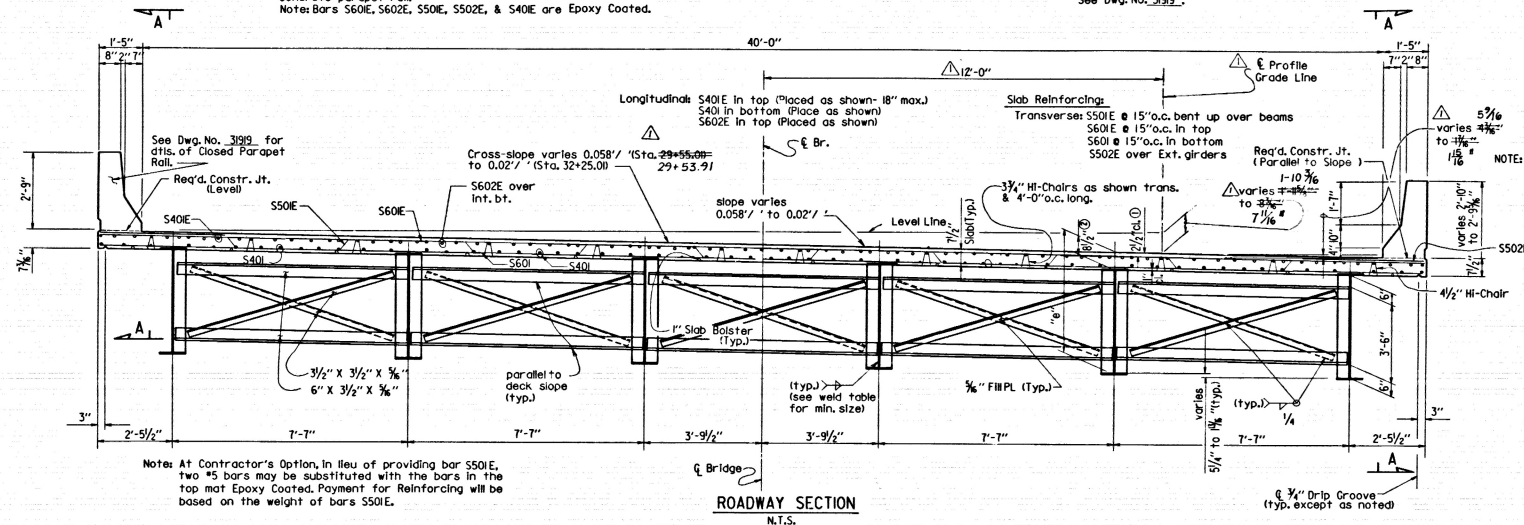


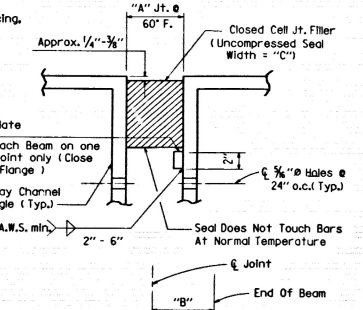
Note: Balled Linseed Oil Treatment shall be applied to the Roadway Surface and the face and top of the concrete parapet rail.  
Note: Bars S60IE, S602E, S50IE, S502E, & S40IE are Epoxy Coated.

Note: For Section A-A & B-B, See Dwg. No. 31918.

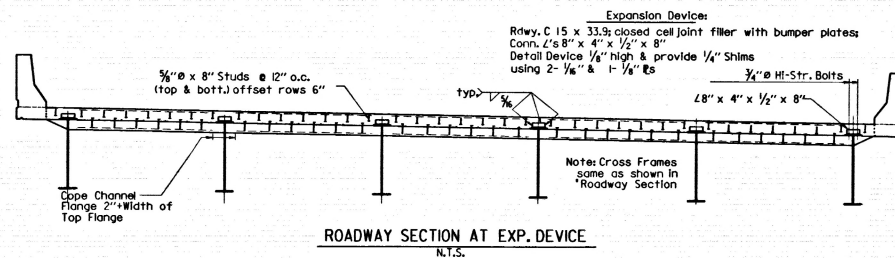
DATE	DATE	DATE	DATE	FED. ROAD DIST. NO.	STATE	FED. AID PROJ. NO.	SHEET NO.	TOTAL SHEETS
REVISED	FILED	REVISED	FILED	6	ARK.		41	102
7-11-91	7-11-91							
				JOB NO.	5602			
				6405	SPAN DETAILS		31918	



Notes: For open parapet reinforcing, see Dwg. No. 31919.



Note: No joint at contact surfaces between Jt. Filler & Steel. Contact Surfaces between Joint Filler and Steel shall be prepared according to recommendations of the Joint Filler Manufacturer. Installation is limited to 40' F min. and 80' Max.  
A Bumper Plate may be placed on each side of the Joint, if the total thickness equals the size shown in the Table.

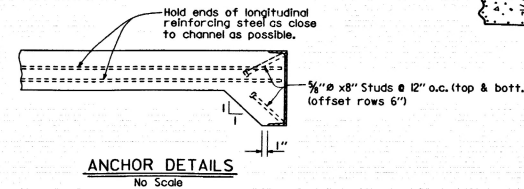
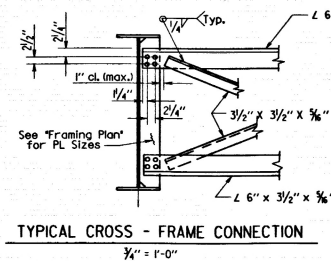
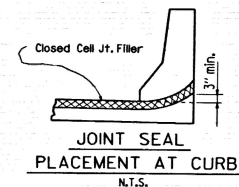


1/4" x 1" Type 6 Poured Synthetic Polymer Jt. In slab to be paid for as Class (SAC) Concrete. If slab joints are to be sawed, they shall be sawed before any vehicular traffic is allowed on the unit. See "Reinforcing Plan" for location of joints. See Subsection 50.03(h) and 50.04(j) for material and construction specifications.

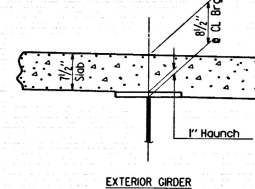
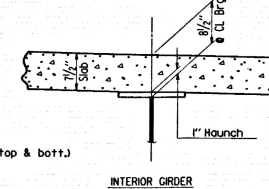
SLAB JOINT DETAIL  
No Scale

JOINT FILLER DATA

"A" Joint Width Perpendicular To Joint @ 60' F	"B" Perpendicular To Joint	"C" Uncompressed Seal Width	Bumper Plate Size
1"	1 1/4" ±	1 1/4"	3/4" x 2" x 12"
1 1/2"	2" ±	2 1/4"	1 1/4" x 2" x 12"
2"	2 1/4" ±	2 1/2"	1 3/4" x 2" x 12"
2 1/2"	2 3/4" ±	3"	1 7/8" x 2" x 12"
3"	3" ±	4"	2" x 2" x 12"
3 1/2"	3 1/2" ±	4 1/2"	2 1/4" x 2" x 12"
3 3/4"	3 3/4" ±	5"	2 1/2" x 2" x 12"



① Tolerances Minus: 1/4"  
Plus: Equal to amount of slab thickening used to meet slab thickness tolerance. See "Typical Haunch Detail".  
② See "Typical Haunch Detail".



Note: Tolerance for slab thickness is minus 1/4" and plus 1". Interior and exterior girder haunches may be increased to 1" greater than the dimension shown. No adjustment for increase in quantities will be made for thickening slab or deepening haunch.

TYP. HAUNCH DETAILS

Changed location of profile grade line - Exp. 7-11-91

SHEET 1 OF 5  
DETAILS OF  
270'-0" CONT. PLATE GIRDER UNIT  
MOUNTAIN VIEW - SOUTH BRS. & APPRS.  
STONE COUNTY

ROUTE 5 SEC. 16  
ARKANSAS STATE HIGHWAY COMMISSION  
LITTLE ROCK, ARK.  
DRAWN BY: EJR DATE: 11-12-90  
CHECKED BY: JCT DATE: 5-19-91  
DESIGNED BY: JCT DATE: 3-9-90  
BRIDGE NO. 6405 DRAWING NO. 31918

JK 6553, 05002XXX2, 521, 1, 550, 3001, 5002

